

Project Designer kerto

	A	B
1	1	5
2	2	5
3	3	5
4	4	5
5	5	5
6	6	5
7	7	5
8	8	5
9	9	5
10	10	5

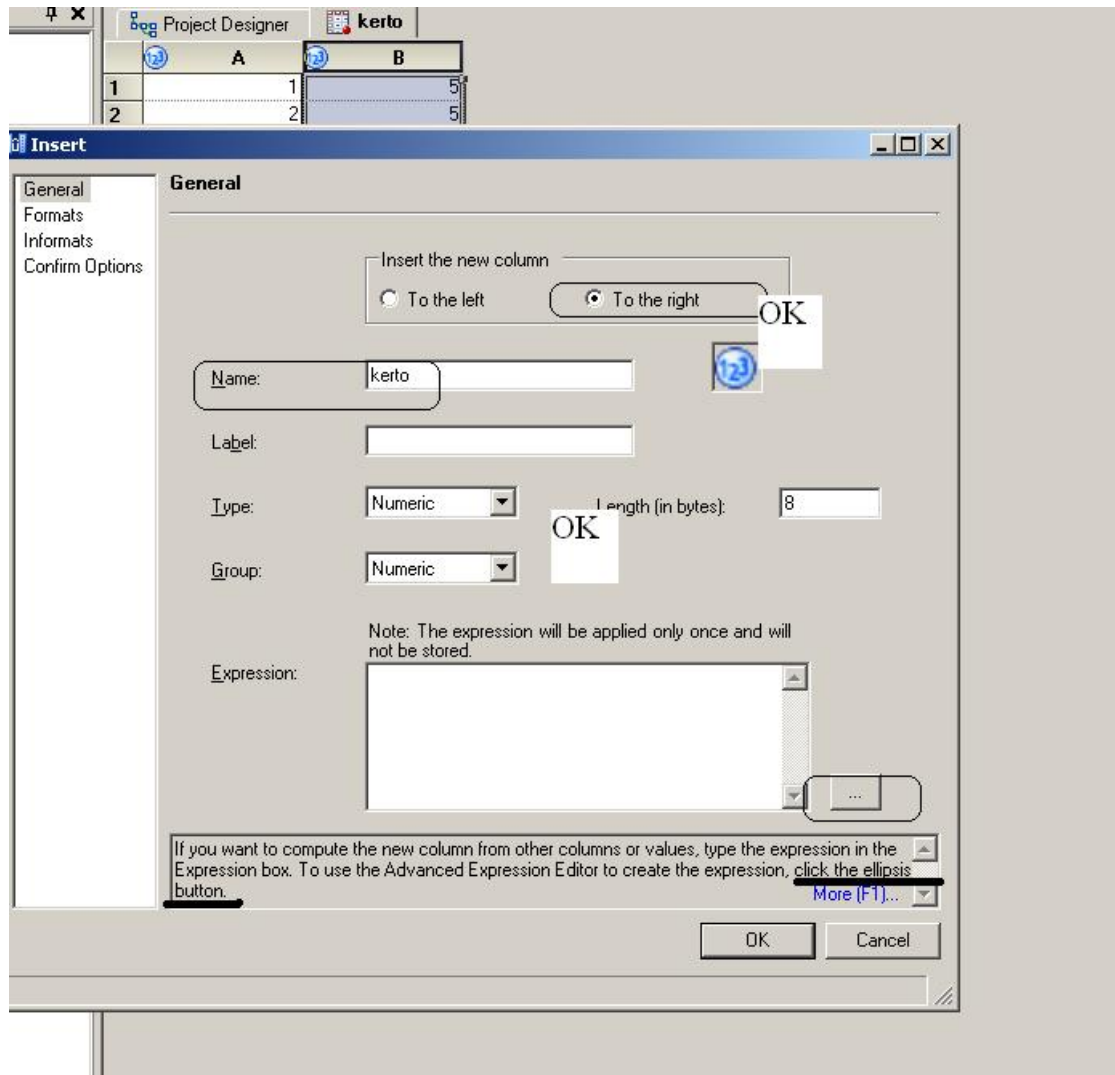
Klikkaa hiiren oikealla näppäimellä

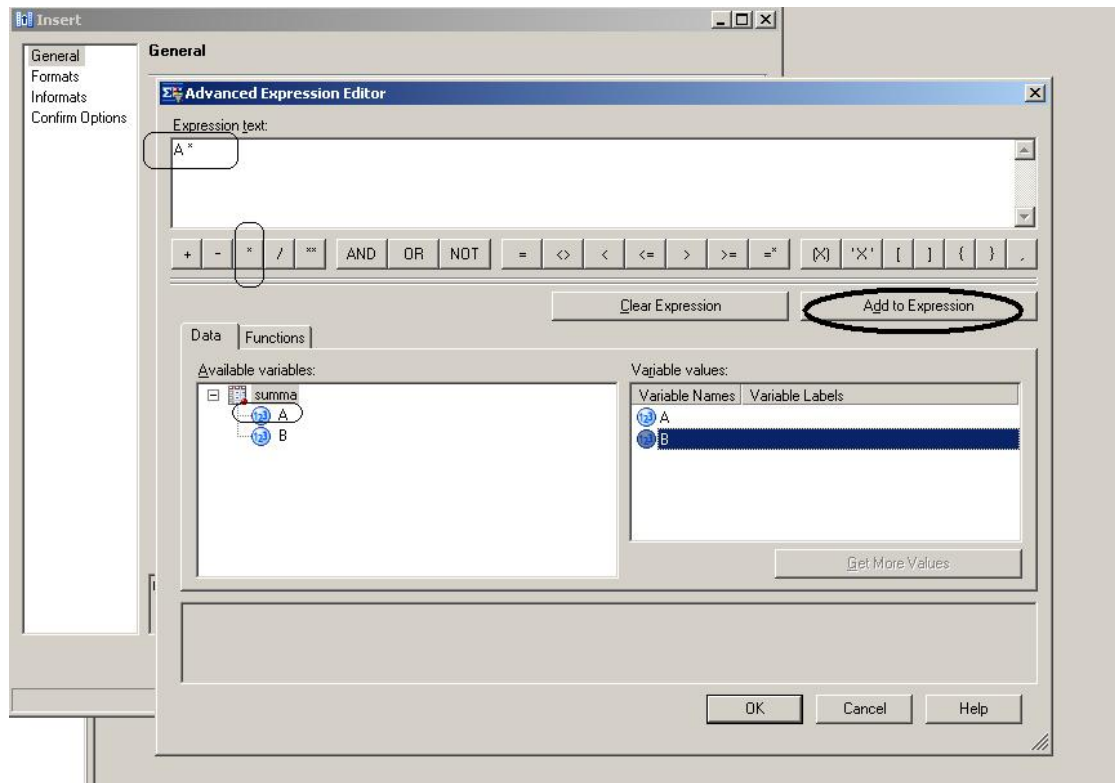
Project Designer kerto

	A	B
1	1	
2	2	
3	3	
4	4	
5	5	
6	6	
7	7	
8	8	
9	9	
10	10	

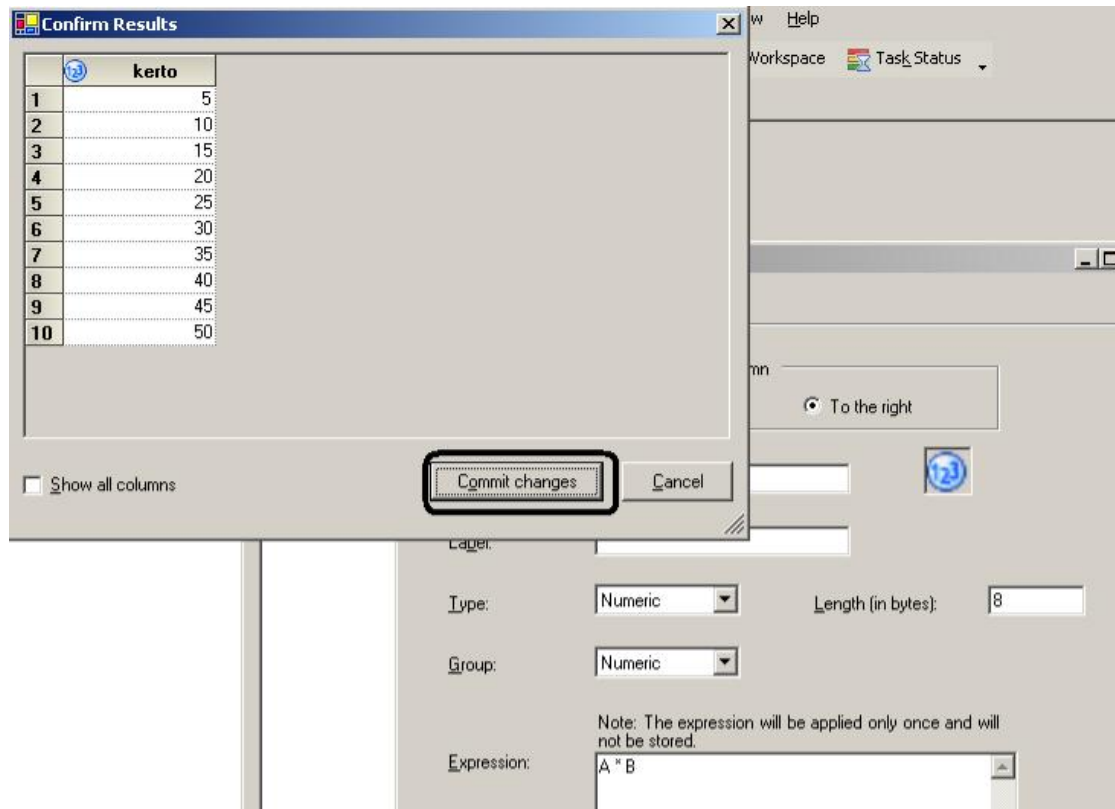
- Cut
- Copy
- Paste
- Hide
- Show
- Hold
- Free
- Delete
- Insert Column...
- Width...
- Properties...

Insert Column





Kaksi peräkkäistä



Lopputus:

The screenshot displays the SAS Enterprise Guide interface. The main workspace shows a project flow diagram with three nodes: 'A', 'B', and 'kerto'. Node 'A' is connected to 'B', and 'B' is connected to 'kerto'. Below the diagram, a data table is visible, showing the results of the process flow. The table has four columns: 'Step', 'A', 'B', and 'kerto'. The data is as follows:

Step	A	B	kerto
1	1	5	5
2	2	5	10
3	3	5	15
4	4	5	20
5	5	5	25
6	6	5	30
7	7	5	35
8	8	5	40
9	9	5	45
10	10	5	50

The Task Status window at the bottom shows a table with columns for Task, Status, Queue, and Server. The table is currently empty.

The Windows taskbar at the bottom shows the Start button, several open applications including Mail, SAS Enterprise Guide, and Paint, and the system tray with the time 21:28.